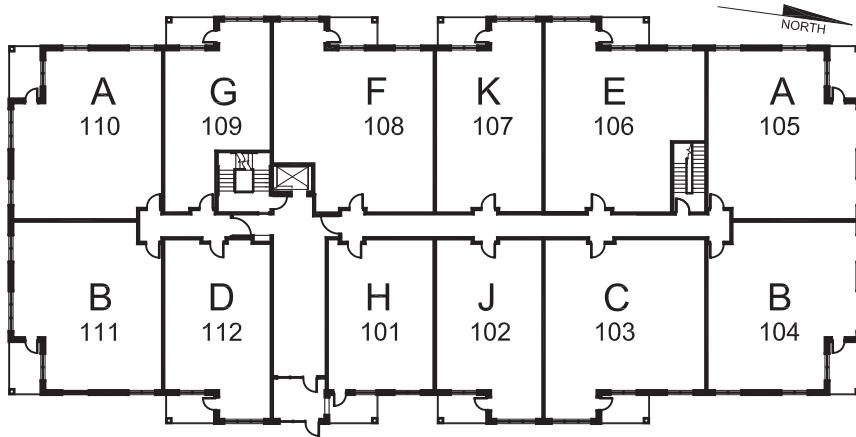


WOODMAN'S GROVE RESIDENCES

GROUND FLOOR

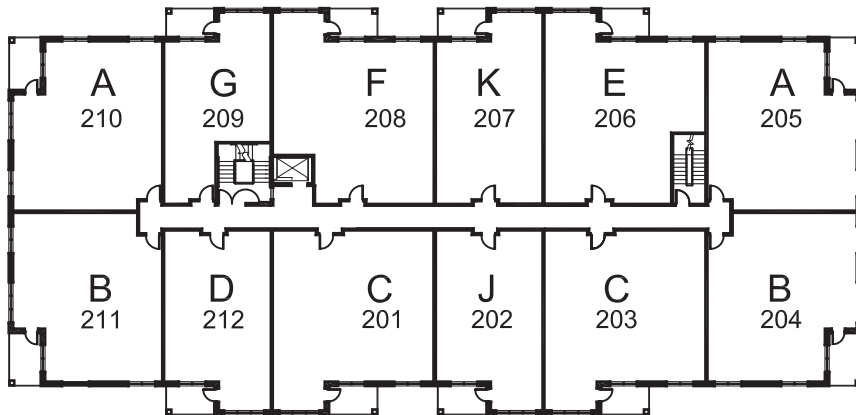
SOUTH SIDE



BASIN VIEW

SECOND FLOOR

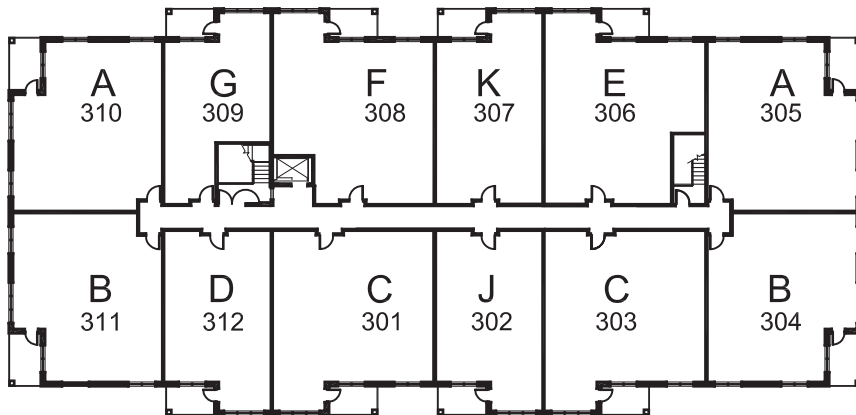
SOUTH SIDE



BASIN VIEW

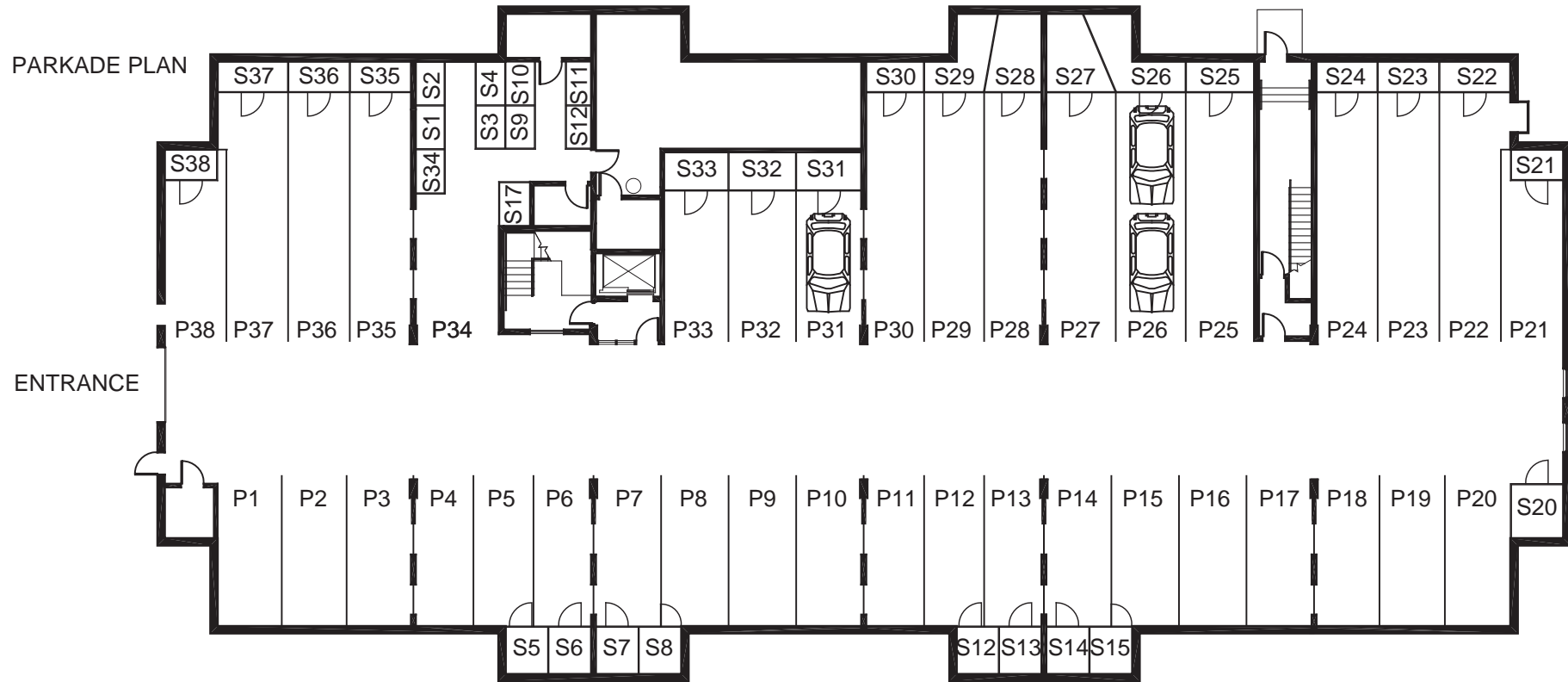
THIRD FLOOR

SOUTH SIDE



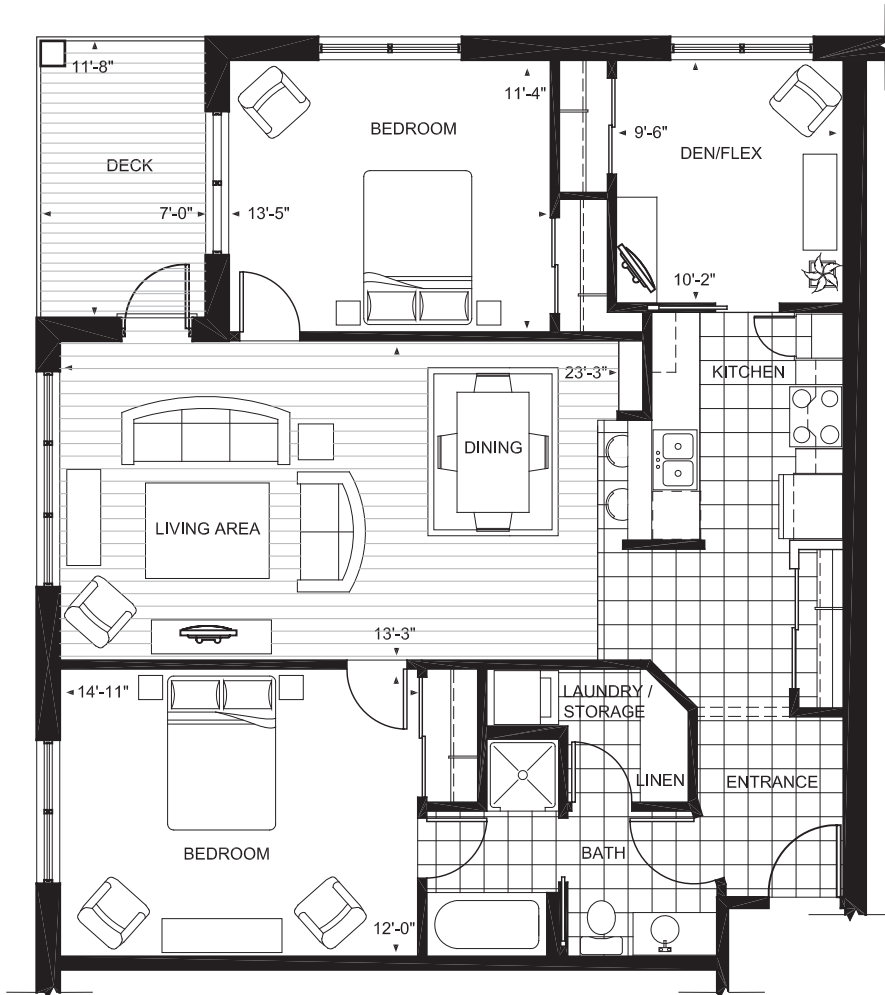
BASIN VIEW

WOODMAN'S GROVE RESIDENCES



WOODMAN'S
GROVE
RESIDENCES

A 2 BEDROOM + DEN



SUITES:
110, 210, 310

105, 205, 305
(reflected mirror layout)

SUITE FEATURES:

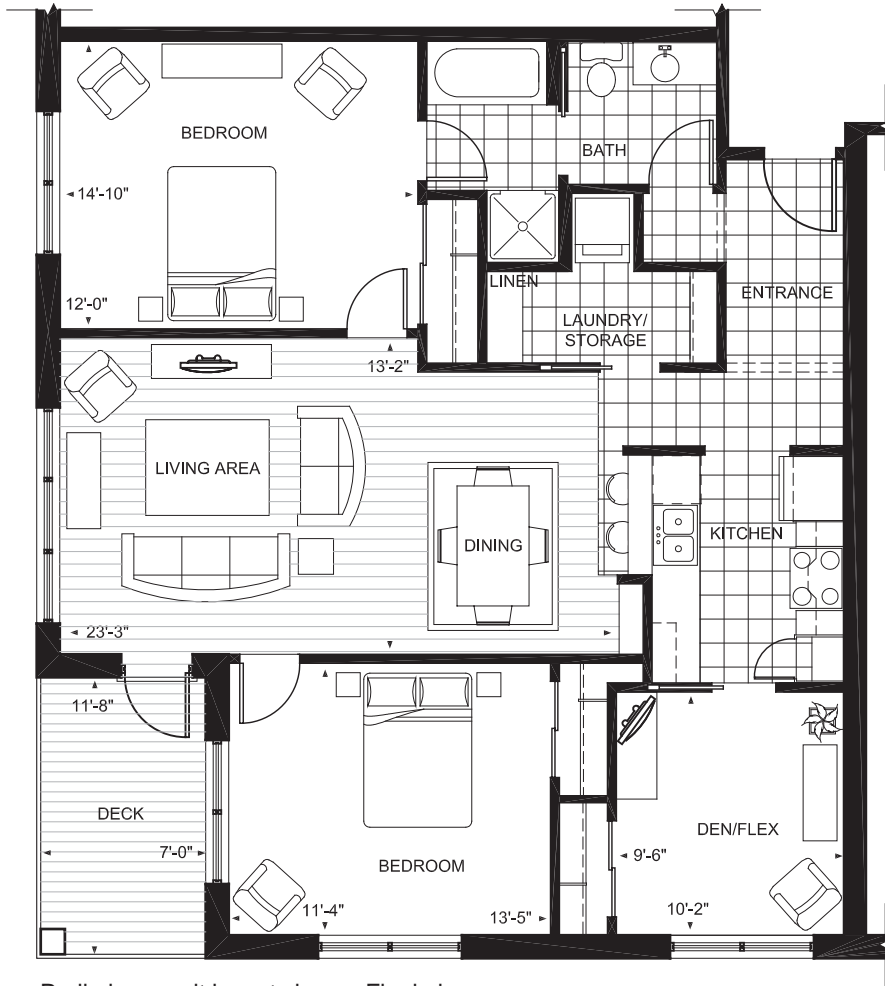
- 1221 Sq.Ft.
- 2 BEDROOMS
- DEN/FLEX ROOM
- KITCHEN PENINSULA WITH RAISED EATING COUNTER
- 6 APPLIANCES
- SHOWER STALL + SOAKER TUB
- EXTERIOR DECK

Preliminary unit layout shown. Final plan may vary.

Scale: 1/8" = 1'-0"

WOODMAN'S
GROVE
RESIDENCES

B 2 BEDROOM + DEN



SUITES:

111, 211, 311

104, 204, 304

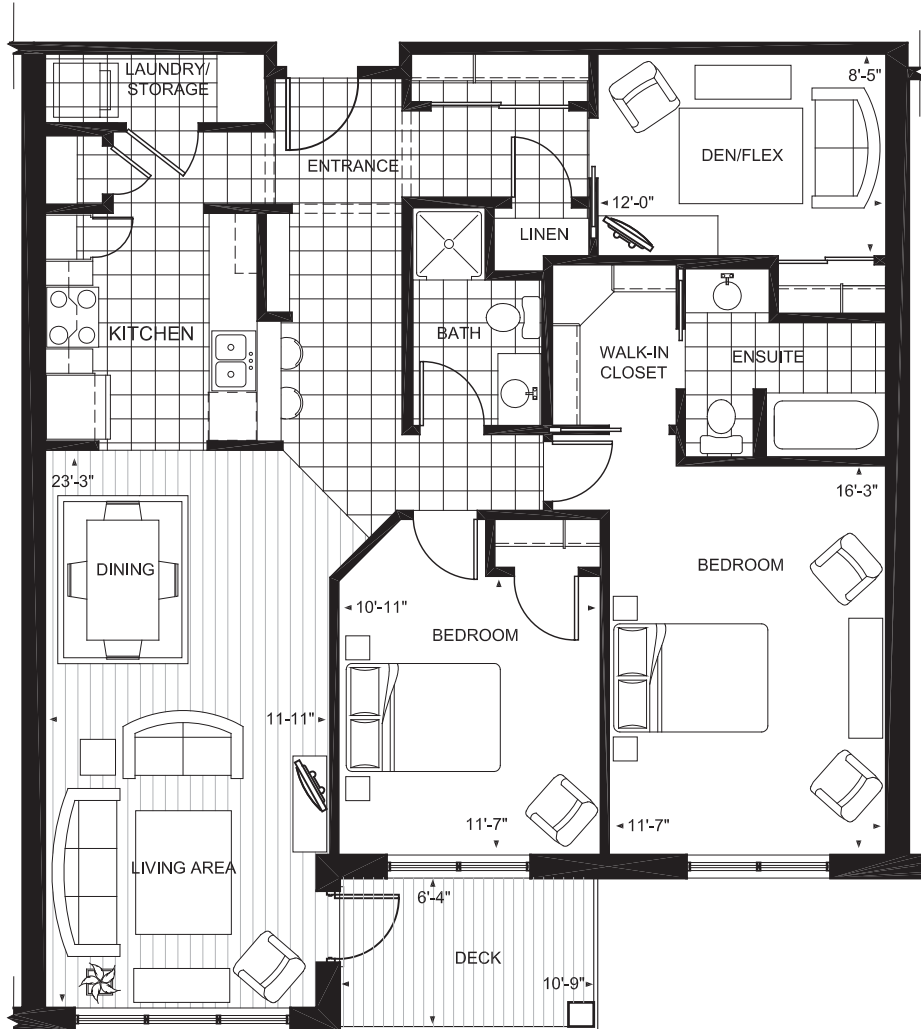
(reflected mirror layouts)

SUITE FEATURES:

- 1207 Sq.Ft.
- 2 BEDROOMS
- DEN/FLEX ROOM
- KITCHEN PENINSULA WITH RAISED EATING COUNTER
- 6 APPLIANCES
- SHOWER STALL + SOAKER TUB
- EXTERIOR DECK

Preliminary unit layout shown. Final plan may vary.

Scale: 1/8" = 1'-0"



SUITES:
103, 201, 203, 301, 303

SUITE FEATURES:

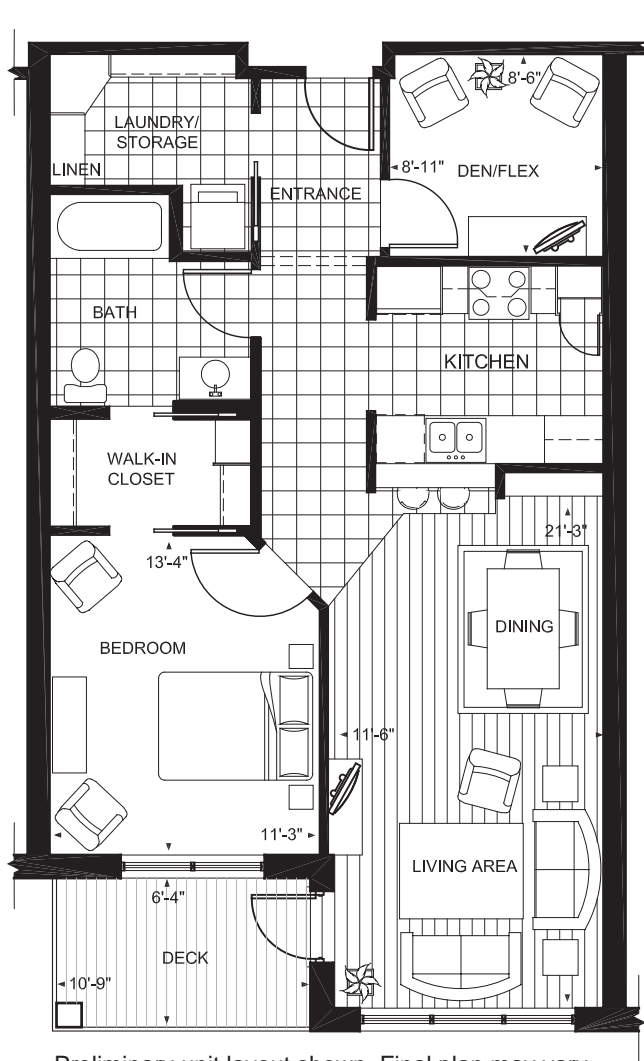
- 1328 Sq.Ft.
- 2 BEDROOMS
- ENSUITE BATH
- DEN/FLEX ROOM
- KITCHEN PENINSULA WITH RAISED EATING COUNTER
- 6 APPLIANCES
- SHOWER STALL + SOAKER TUB
- EXTERIOR DECK

Preliminary unit layout shown. Final plan may vary.

Scale: 1/8" = 1'-0"

WOODMAN'S GROVE RESIDENCES

D 1 BEDROOM + DEN



Preliminary unit layout shown. Final plan may vary.

Scale: 1/8" = 1'-0"

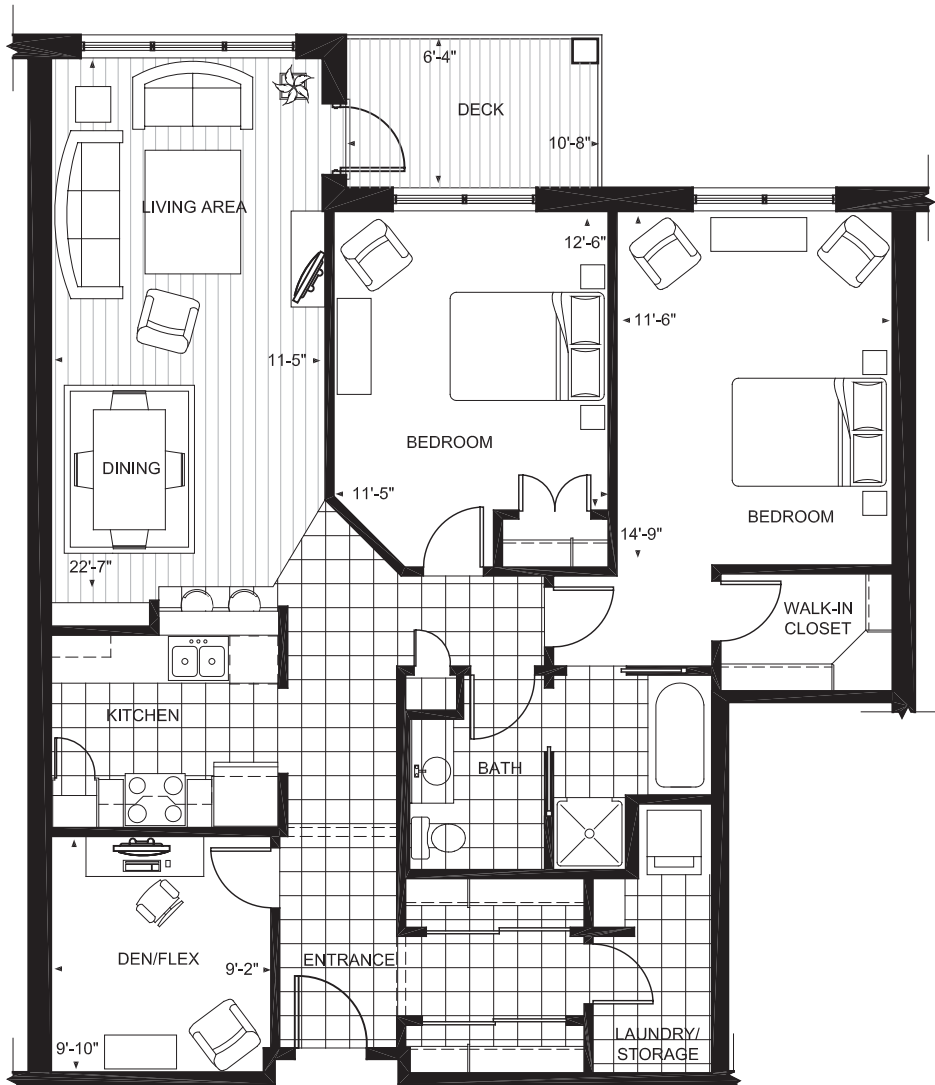
SUITES:
112, 212, 312

SUITE FEATURES:

- 910 Sq.Ft.
- BARRIER FREE UNIT
- 1 BEDROOM
- DEN/FLEX ROOM
- KITCHEN PENINSULA WITH RAISED EATING COUNTER
- 6 APPLIANCES
- SOAKER TUB
- EXTERIOR DECK

WOODMAN'S GROVE RESIDENCES

E 2 BEDROOM + DEN



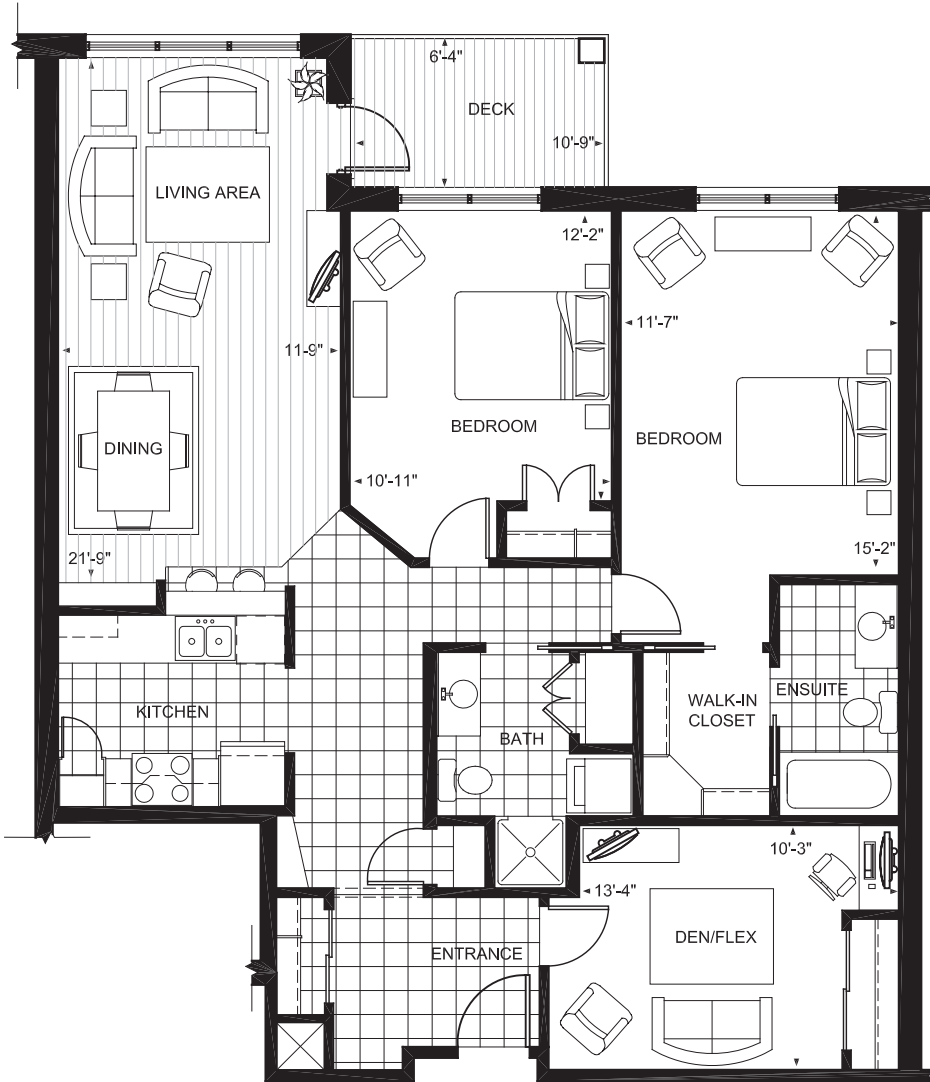
SUITES:
106, 206, 306

SUITE FEATURES:

- 1301 Sq.Ft.
- 2 BEDROOMS
- DEN/FLEX ROOM
- KITCHEN PENINSULA WITH RAISED EATING COUNTER
- 6 APPLIANCES
- SHOWER STALL + SOAKER TUB
- EXTERIOR DECK

Preliminary unit layout shown. Final plan may vary.

Scale: 1/8" = 1'-0"



SUITES:
108, 208, 308

SUITE FEATURES:

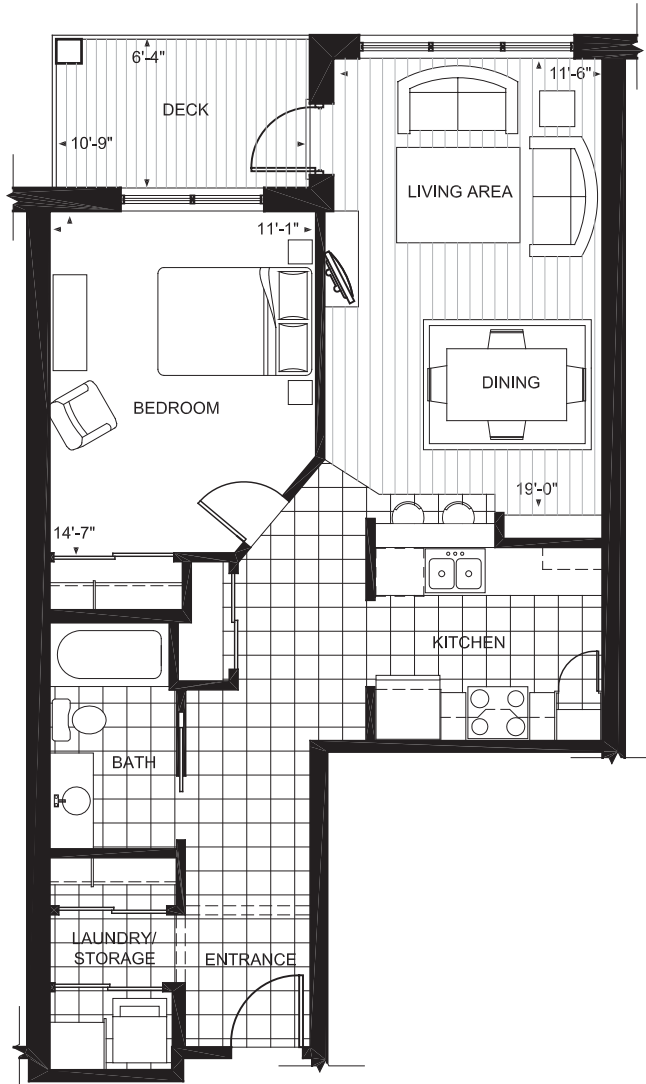
- 1320 Sq.Ft.
- 2 BEDROOMS
- ENSUITE BATH
- DEN/FLEX ROOM
- KITCHEN PENINSULA WITH RAISED EATING COUNTER
- 6 APPLIANCES
- SHOWER STALL + SOAKER TUB
- EXTERIOR DECK

Preliminary unit layout shown. Final plan may vary.

Scale: 1/8" = 1'-0"

WOODMAN'S
GROVE
RESIDENCES

G 1 BEDROOM



SUITES:
109, 209, 309

SUITE FEATURES:

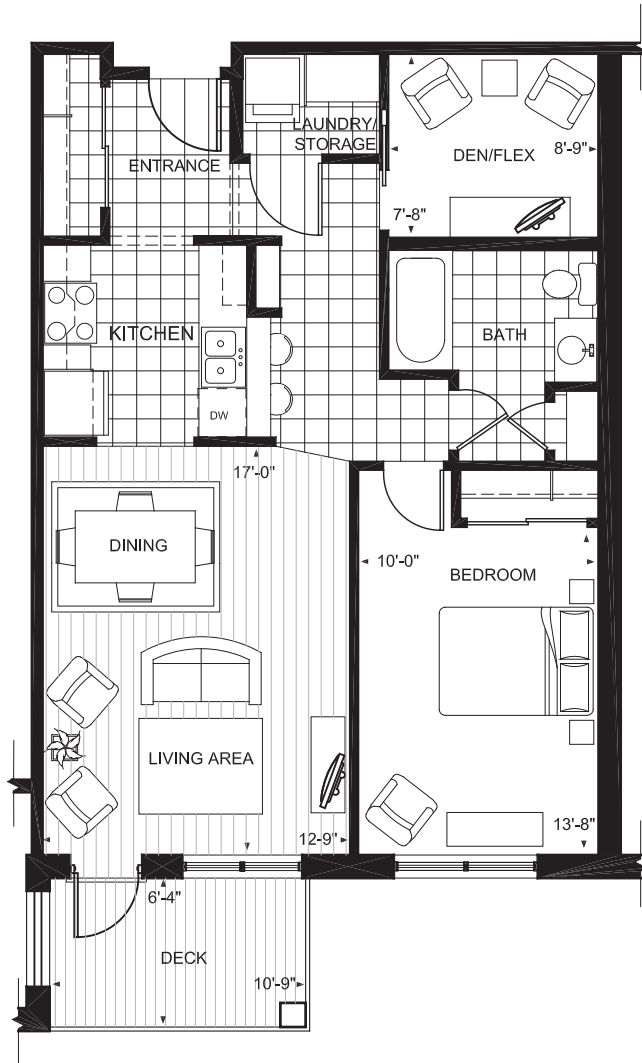
- 805 Sq.Ft.
- 1 BEDROOM
- KITCHEN PENINSULA WITH RAISED EATING COUNTER
- 6 APPLIANCES
- SOAKER TUB
- EXTERIOR DECK

Preliminary unit layout shown. Final plan may vary.

Scale: 1/8" = 1'-0"

WOODMAN'S
GROVE
RESIDENCES

H 1 BEDROOM + DEN



SUITE:
101

SUITE FEATURES:

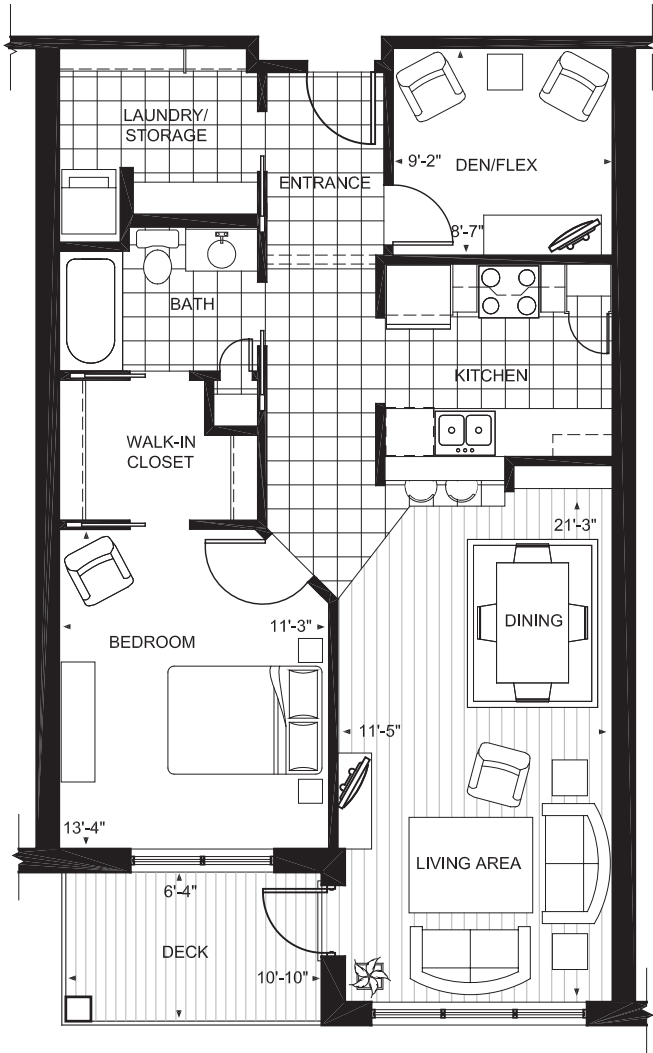
- 832 Sq.Ft.
- 1 BEDROOM
- DEN/FLEX ROOM
- KITCHEN PENINSULA WITH RAISED EATING COUNTER
- 6 APPLIANCES
- SOAKER TUB
- EXTERIOR DECK

Preliminary unit layout shown. Final plan may vary.

Scale: 1/8" = 1'-0"

WOODMAN'S GROVE RESIDENCES

J 1 BEDROOM + DEN



SUITE:
102, 202, 302

SUITE FEATURES:

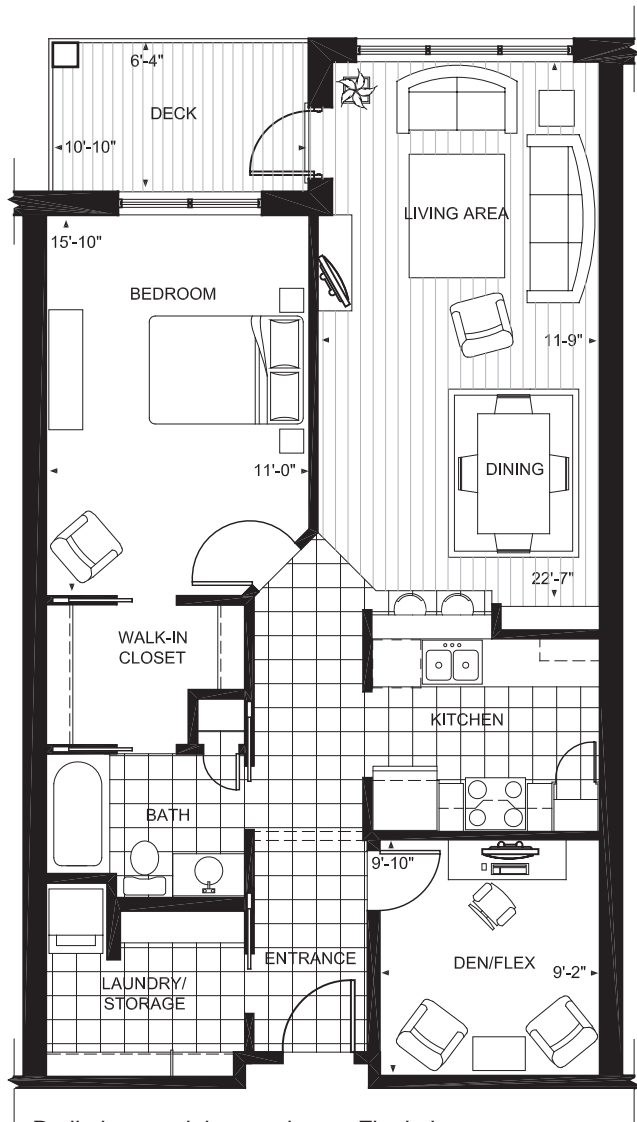
- 910 Sq.Ft.
- 1 BEDROOM
- DEN/FLEX ROOM
- KITCHEN PENINSULA WITH RAISED EATING COUNTER
- 6 APPLIANCES
- SOAKER TUB
- EXTERIOR DECK

Preliminary unit layout shown. Final plan may vary.

Scale: 1/8" = 1'-0"

WOODMAN'S GROVE RESIDENCES

K 1 BEDROOM + DEN



SUITE:
107, 207, 307

SUITE FEATURES:

- 970 Sq.Ft.
- 1 BEDROOM
- DEN/FLEX ROOM
- KITCHEN PENINSULA WITH RAISED EATING COUNTER
- 6 APPLIANCES
- SOAKER TUB
- EXTERIOR DECK

Preliminary unit layout shown. Final plan may vary.

Scale: 1/8" = 1'-0"